

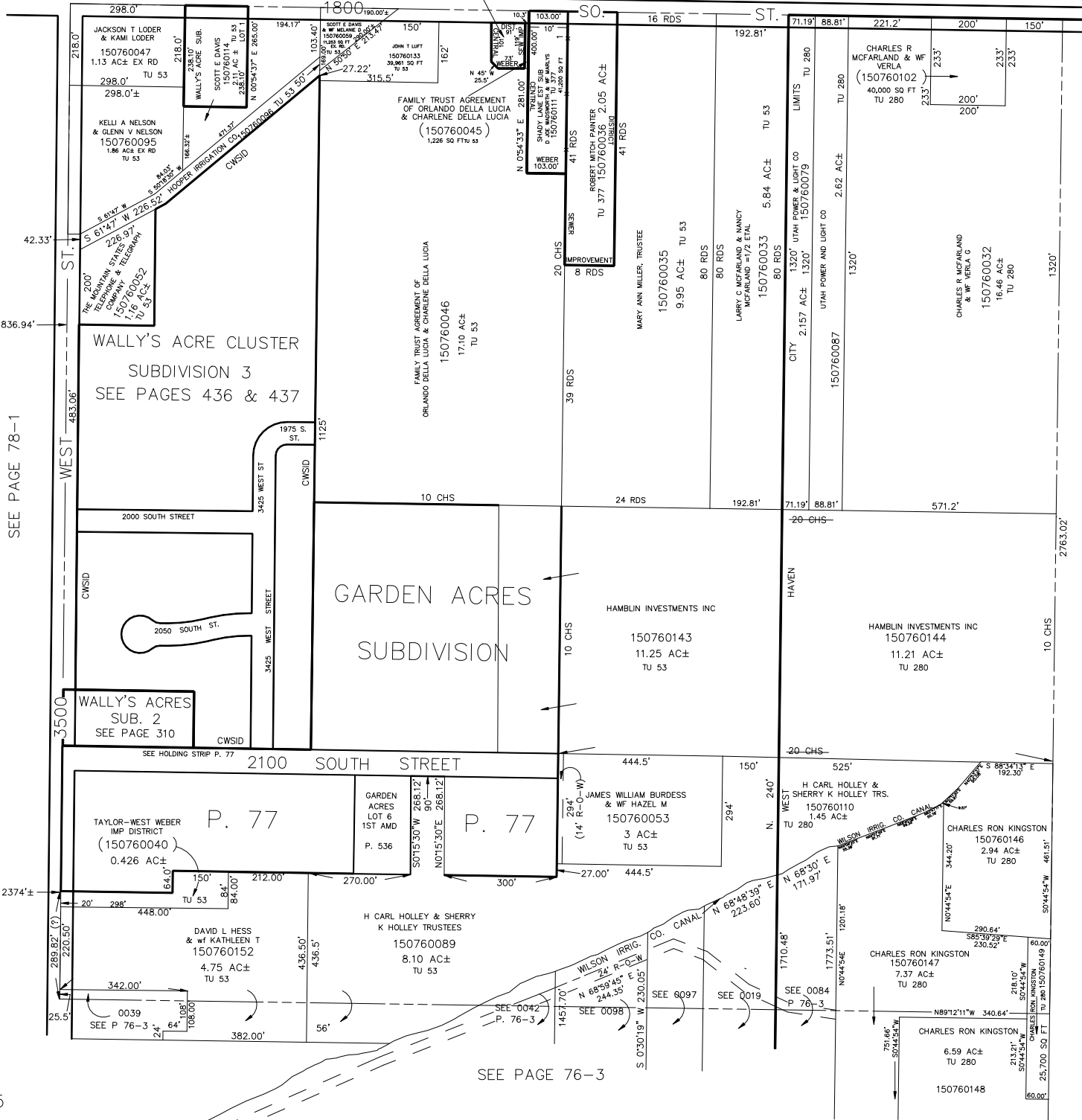
NW 1/4
SECTION 27, T.6N., R.2W., S.L.B. & M.

TAXING UNITS: 53, 280, 377

IN WEST HAVEN CITY & WEBER COUNTY

FAMILY TRUST AGREEMENT
OF ORLANDO DELLA LUCIA
& CHARLENE DELLA LUCIA
(150760125)
11,899 SQ FT TU 377

SCALE 1" = 200'
SEE PAGE 60-3



SEE PAGE 78-1

SEE PAGE 76-1

SEE PAGE 76-3